

The Hampshire



The Hampshire

4 Bed - 3.5 Bath

3081 sqft

Exterior:

High Quality Exterior
Low Maintenance Hardie Lap and Brick
30 Year Dimensional Architectural Roof Shingles & Standing Seam Metal Roof
Exposed Rafter Tails
Single Hung, Double Pane High Efficiency Low E Glass Vinyl Windows
Low Maintenance Fiberglass Front Door & Locking System
Sodded Yard and Standard Landscaping Package with Irrigation System

Building Standards:

Slab on Grade Concrete Foundation
Traditional Stick Framing Methods
Framed "Green Corners" for higher Energy Efficiency
Engineered AdvanTech Sub Floor
Eco Friendly Sentricon Termite Bait Station
Studs, Ceiling Joists, and Raters will be 16" On Center

Interior Features:

9' Smooth Ceilings throughout first floor & 8' on second floor
Open Cell R20 Spray Foam Installed on Roof Deck
Traditional R13 Batt/Fiberglass Insulation
-Draftstopping Measures to Seal Insulation
50 Gallon Gas Water Heater
Gas Furnace HVAC System

Upgraded Finish Options:

Farmhouse Sink	\$1,250
Under Cabinet Lighting	\$1,200
2" White Faux Wood Blinds throughout	\$69 per window/door
Window Screens (on all operable windows)	\$32 per window
Solid Core Doors throughout	\$1,700
Barn Door	\$500
Floor Outlet	\$500 per
USB Outlet	\$50 per
Surround Sound	\$3,250
(Includes 5 ceiling speakers, 1 sub woofer (floor standing), 5 channel audio-video receiver/amplifier & 1 Control4 entertainment controller with remote)	
Music Package	\$1,000 per room
(Includes 2 in ceiling speakers & 1 zone amp w/ wireless remote control via smart phone or tablet app, requires WiFi)	

Interior Finishes:

Design Features

6" Baseboards & Cased Windows throughout
Judges Paneling in the Dining Room and Foyer
Shiplap Above Fireplace Mantle
Recessed Lighting throughout Kitchen, Living Room, Dining Room & Master Bedroom
Wire Shelving installed in all Closets, Pantry & Laundry Areas
Interior walls primed & painted with Sherwin Williams® Super Paint. Includes two wall colors, one trim color & one ceiling color
Vent-less Gas Fireplace with Brick Chimney
Two options for 5' tall brick surround Fireplace, including a 6x12 mantle with corbels or a Shaker Style mantle.

Flooring

Standard Engineered Hardwood Flooring in the Common Areas, laundry room, and powder bathroom
Ceramic tile in all full bathrooms
Carpet in all Bedrooms, closets, & any other rooms

Kitchen

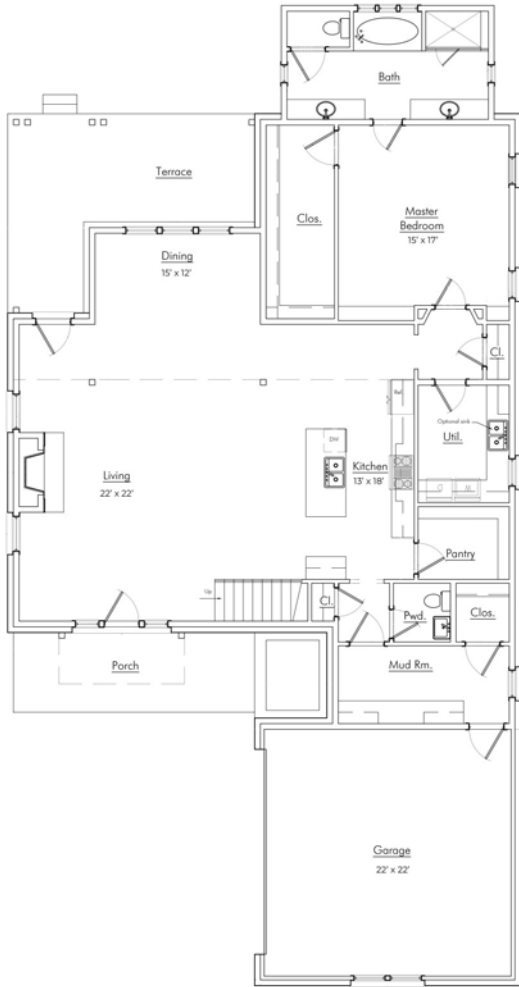
Custom Designed Wooden Cabinets in Kitchen & Bathrooms Granite countertops throughout
Stainless Steel Appliances by Whirlpool®, including the Dishwasher, Gas Freesanding Range & Microwave
Delta® Kitchen and Bath Fixtures in Oil Rubbed Bronze, Brushed Nickle, or Chrome
Stainless Steel Undermount Sink in Kitchen
Tiled Backsplash in Kitchen

Bathrooms

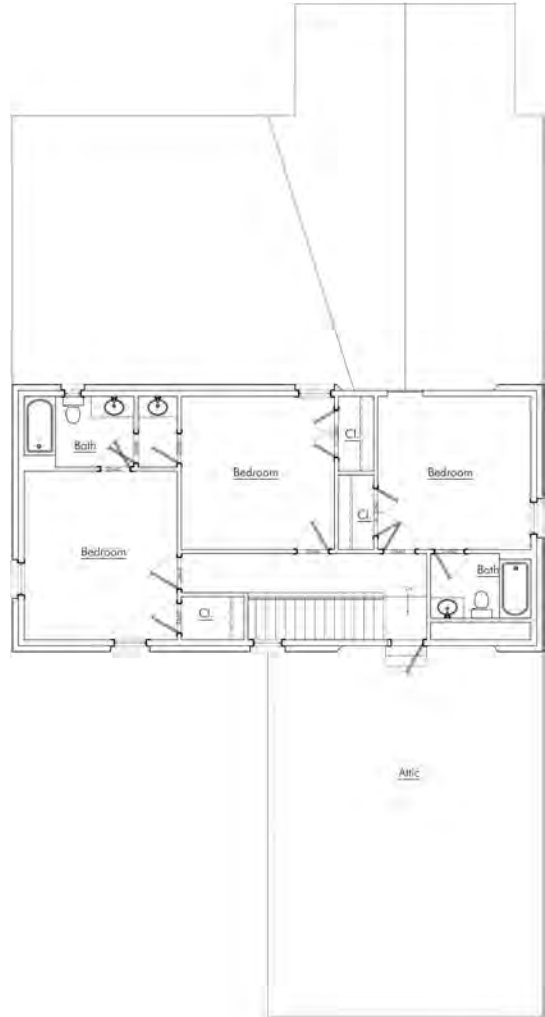
Schluter Shower system with Delta fixtures & full tile surround with a semi-frameless glass shower door in Master Bathroom
Soaking Garden Tub
Large Double Vanity in Master Bathroom with Under-mount sinks
Vanity Mirrors
Low Maintenance High Quality Fiberglass Tub/ Shower in all other Bathrooms

Bedrooms

All Bedrooms will have Ceiling Fans



Main Level



Upper Level



THE ELEVATION AND FLOOR PLANS CONTAINED HEREIN ARE NOT TO SCALE AND ARE GRAPHIC ILLUSTRATIONS FOR MARKETING AND PRESENTATION PURPOSES ONLY. ACTUAL FLOOR PLANS AND ALL MATERIALS MAY VARY PRIOR TO OR DURING CONSTRUCTION. SOME FEATURES SHOWN MAY BE OPTIONAL. HOLLAND HOMES RESERVES THE RIGHT TO SUBSTITUTE MATERIALS AND COMPONENTS OF SIMILAR QUALITY, AND TO CHANGE FEATURES, OPTIONS, AND ARCHITECTURAL DETAILS WITHOUT PRIOR NOTICE. ACCORDINGLY, NEITHER THESE MATERIALS, NOR ANY COMMUNICATION MADE OR GIVEN IN CONNECTION WITH THESE MATERIALS, MAY BE DEEMED TO CONSTITUTE ANY REPRESENTATION OF WARRANTY, CONTRACT OR GUARANTEE OR MAY OTHERWISE BE RELIED UPON BY ANY PERSON OR ENTITY UNLESS CONVEYED IN WRITTEN FORM. THIS MARKETING INFORMATION AND PLAN ARE PROPERTY OF HOLLAND HOMES.