

The Sawgrass

Stonewood Farms



The Sawgrass

4 Bed – 3.5 Bath, with Bonus Room

3786 SQFT

The Sawgrass's Standard Features

Building Standards:

- Slab on grade concrete foundation
- Traditional stick framing methods
- Framed "Green Corners" for higher energy efficiency
- Engineered AdvanTech Sub Floor
- Eco friendly Sentricon Termite Bait Station
- Studs, ceiling joists, and rafters will be 16" on center on main level and 24" on second level

Exterior Features:

- Hardie Lap & Board and Batten exterior siding
- 30 Year Dimensional Architectural Roof Shingles
- Metal Roof
- Exposed rafter tails
- Single hung, double paned, high efficiency, Low E glass, vinyl windows
- Fiberglass front door & locking system
- 8x8 Smooth pine columns on the front and back porches
- Landscaping Allowance
- 3 Car Garage

Interior Features:

- 10' smooth ceilings throughout first floor and 9' ceilings throughout the second floor
- Open cell R20 Spray Foam installed on roof deck
- Traditional R13 Batt/Fiberglass insulation installed in the exterior walls (draft stopping measures to seal insulation)
- 50-gallon electric water heater
- 14 SEER electric heat pump
- Ventless electric log fireplace with brick surround and hearth and a shaker style mantel
- Foundation SmartHome Package that includes one SmartHome control panel, one video doorbell, 36 months of free SmartHome automation, and a welcome visit from Chorus SmartSecure after closing.

Interior Finishes:

Design Features

- 6" Baseboards & cased windows throughout
- Recessed lighting throughout kitchen, living room, dining room & primary bedroom
- Wire shelving installed in all closets, pantry & laundry areas
- Interior walls primed & painted with Sherwin Williams® Super Paint. Includes two wall colors, one trim color & one ceiling color

Flooring

- Standard LVP Flooring in the first-floor common areas, laundry room, and powder bathroom
- Ceramic tile in all full bathrooms
- Carpet in all bedrooms, closets, & any other rooms

Kitchen

- Shaker style, custom designed, wooden cabinets in kitchen & bathrooms
- Granite countertops throughout
- Stainless Steel Appliances by Whirlpool®, including the Dishwasher, electric freestanding range, & over the range microwave
- Stainless Steel Undermount Sink in Kitchen
- Tiled Backsplash in Kitchen
- Chrome Delta® Kitchen Fixtures

Bathrooms

- Tile shower with water proofing system in the primary bathroom
- Soaking Garden tub in the primary bathroom
- Large double vanity in primary bathroom with under-mount sink
- Vanity mirrors
- Chrome Delta® Bath Fixtures
- High quality fiberglass tub/shower in all other bathrooms

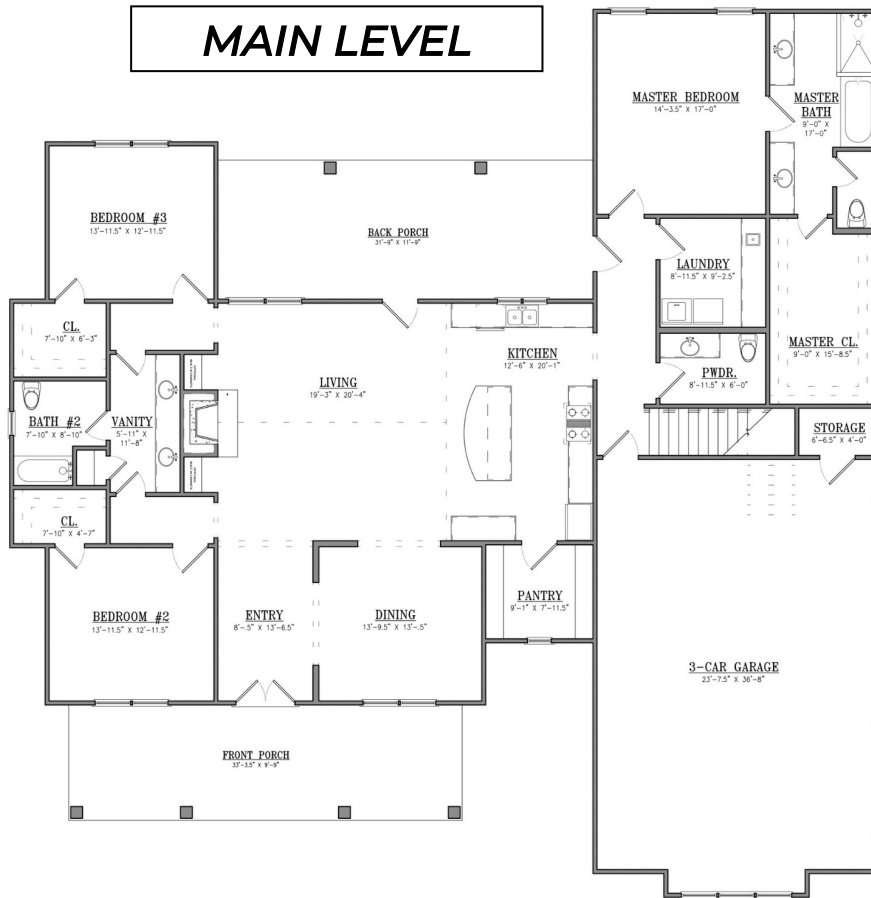
Bedrooms

- All Bedrooms will have ceiling fans

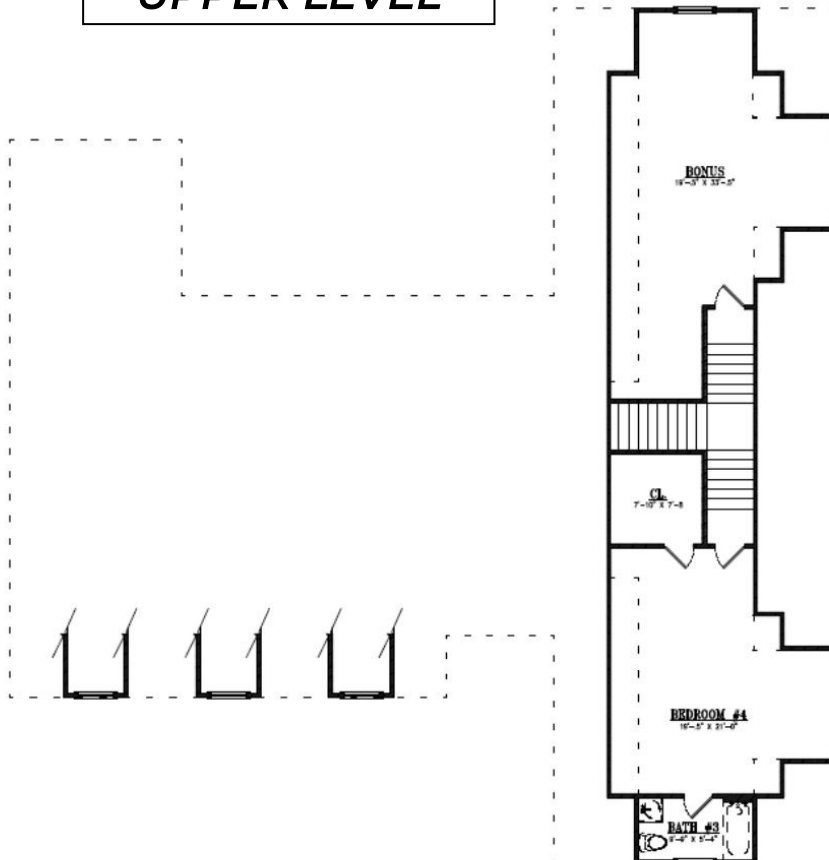
Customizing isn't complicated! Upgraded finish options are available for our standard finishes in pre-sale homes. We have all of our upgrade options, details, and pricing available for you in our Design Guide. View the link below to access it!

www.hollandhomesllc.com/process/design-guide

MAIN LEVEL



UPPER LEVEL



This plan was inspired by House Plan Zone, LLC. Plans are licensed for use from House Plan Zone or are derivatives of plans copyrighted by House Plan Zone, LLC.



"Building Reputations"

www.HollandHomesllc.com

(334) 332-7157

THE ELEVATION AND FLOOR PLANS CONTAINED HEREIN ARE NOT TO SCALE AND ARE GRAPHIC ILLUSTRATIONS FOR MARKETING AND PRESENTATION PURPOSES ONLY. ACTUAL FLOOR PLANS AND ALL MATERIALS MAY VARY PRIOR TO OR DURING CONSTRUCTION. SOME FEATURES SHOWN MAY BE OPTIONAL. HOLLAND HOMES RESERVES THE RIGHT TO SUBSTITUTE MATERIALS AND COMPONENTS OF SIMILAR QUALITY, AND TO CHANGE FEATURES, OPTIONS, AND ARCHITECTURAL DETAILS WITHOUT PRIOR NOTICE. ACCORDINGLY, NEITHER THESE MATERIALS, NOR ANY COMMUNICATION MADE OR GIVEN IN CONNECTION WITH THESE MATERIALS, MAY BE DEEMED TO CONSTITUTE ANY REPRESENTATION OF WARRANTY, CONTRACT OR GUARANTEE OR MAY OTHERWISE BE RELIED UPON BY ANY PERSON OR ENTITY UNLESS CONVEYED IN WRITTEN FORM. THIS MARKETING INFORMATION AND PLAN ARE PROPERTY OF HOLLAND HOMES.