

The Azalea Grand

OWENS CROSSING



The Azalea Grand

5 Bed – 4 Bath

2654 SQFT

The Azalea Grand's Standard Features

Building Standards:

- Slab on grade concrete foundation
- Traditional stick framing methods
- Framed "Green Corners" for higher energy efficiency
- Engineered AdvanTech Sub Floor
- Eco friendly Sentricon Termite Bait Station
- Studs, ceiling joists, and rafters will be 24" on center

Exterior Features:

- Low maintenance Hardie Lap & Masonry brick
- 30 Year Dimensional Architectural Roof Shingles
- Covered back porch with vented vinyl ceilings
- Exposed rafter tails
- Double hung, double pane high efficiency Low E glass vinyl windows
- Low maintenance fiberglass front door & locking system
- Landscaping to include 10 pallets of sod, irrigation system, & planting beds in front of the house
- 2 car garage
- 8x8 smooth pine columns on the back porch
- 1x6 Cypress shutters with 1x4 raised accents

Interior Features:

- 10' smooth ceilings throughout main floor & 9' ceilings throughout second floor
- Open cell R20 Spray Foam installed on roof deck
- Traditional R13 Batt/Fiberglass Insulation installed in the exterior walls (draft stopping measures to seal Insulation)
- 50-gallon electric water heater
- 14 SEER electric heat pump
- Ventless electric log fireplace with 5' tall brick surround and hearth & shaker style mantle with corbels

Interior Finishes:

Design Features

- 6" Baseboards & cased windows throughout
- Recessed lighting throughout kitchen, living room, dining room & master bedroom
- Wire shelving installed in all closets, pantry & laundry areas
- Interior walls primed & painted with Sherwin Williams® Super Paint. Includes two wall colors, one trim color & one ceiling color

Flooring

- 5" Hand scraped engineered hardwood flooring in all first-floor common areas, & laundry room
- Ceramic tile in all full bathrooms
- Carpet in all bedrooms, closets, & any other rooms

Kitchen

- Custom designed wooden cabinets in kitchen & bathrooms
- Granite countertops throughout
- Stainless Steel appliances by Whirlpool®, including the dishwasher, glass top electric range & microwave
- Chrome Delta® Kitchen Fixtures
- Stainless Steel undermount sink in kitchen
- Tiled backsplash in kitchen

Bathrooms

- Tile shower with waterproofing system in the master bathroom
- Freestanding tub in the master bathroom
- Chrome Delta® Bath Fixtures
- Large double vanity in master bathroom with under-mount sinks
- Vanity mirrors
- Low maintenance high quality fiberglass tub/shower in all other bathrooms

Bedrooms

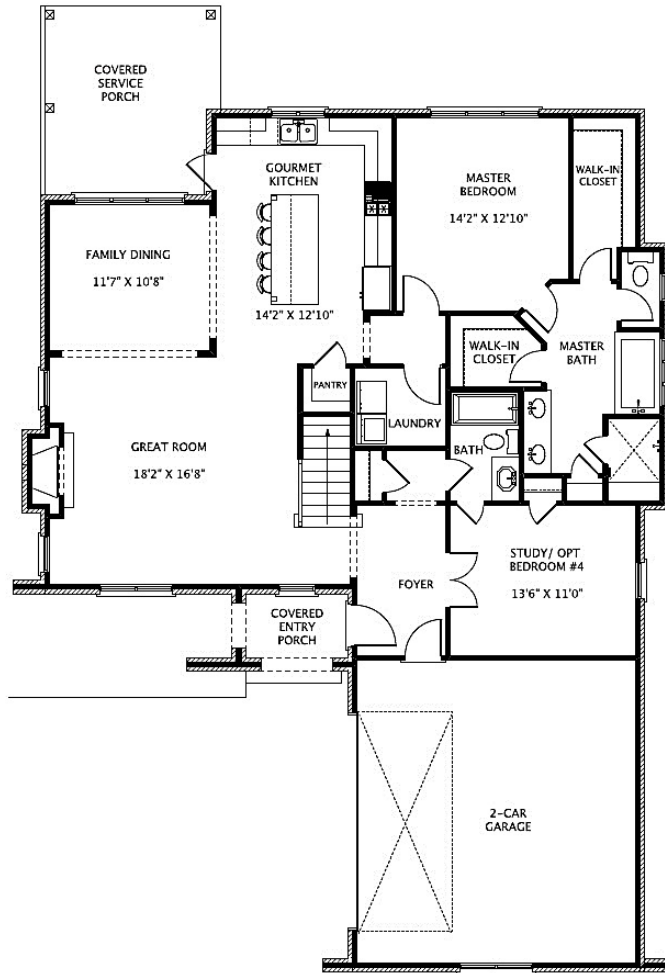
- All Bedrooms will have ceiling fans

Customizing isn't complicated! Upgraded finish options are available for our standard finishes. We have all of our upgrade options, details, and pricing available for you in our Design Guide.

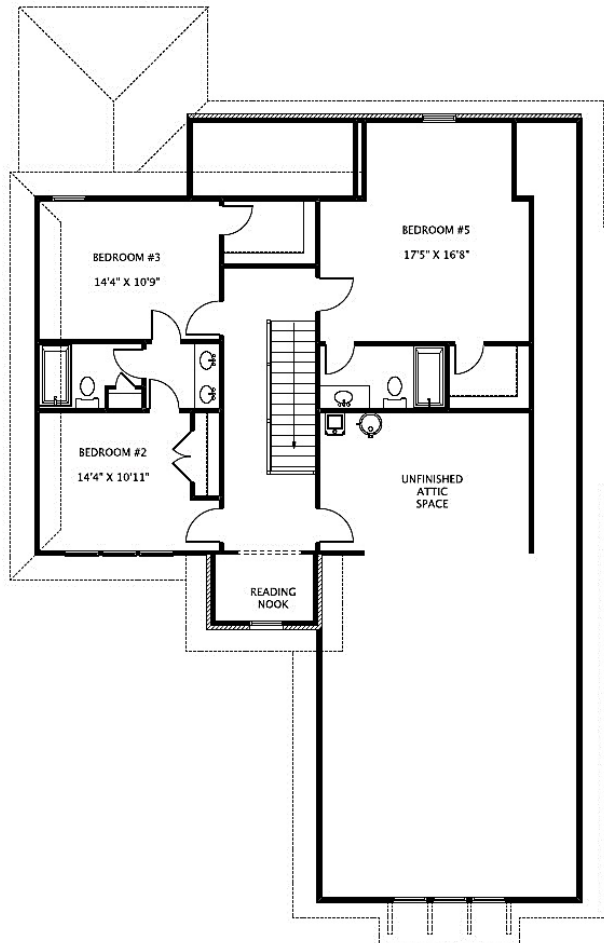
Click the link below to access it!

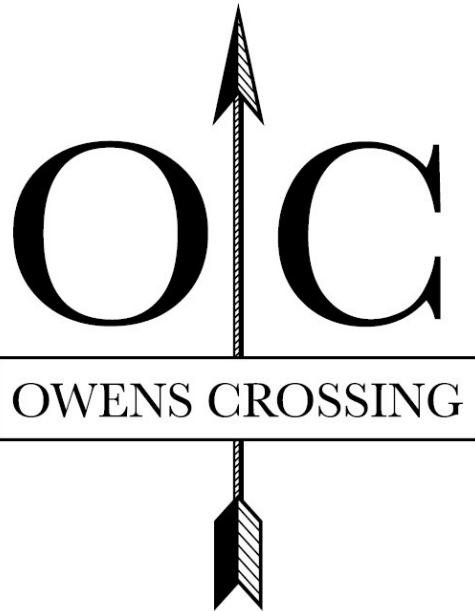
www.hollandhomesllc.com/process/design-guide

MAIN LEVEL



UPPER LEVEL





Holland Homes

"Building Reputations"

www.HollandHomesllc.com

(334) 332-7157

THE ELEVATION AND FLOOR PLANS CONTAINED HEREIN ARE NOT TO SCALE AND ARE GRAPHIC ILLUSTRATIONS FOR MARKETING AND PRESENTATION PURPOSES ONLY. ACTUAL FLOOR PLANS AND ALL MATERIALS MAY VARY PRIOR TO OR DURING CONSTRUCTION. SOME FEATURES SHOWN MAY BE OPTIONAL. HOLLAND HOMES RESERVES THE RIGHT TO SUBSTITUTE MATERIALS AND COMPONENTS OF SIMILAR QUALITY, AND TO CHANGE FEATURES, OPTIONS, AND ARCHITECTURAL DETAILS WITHOUT PRIOR NOTICE. ACCORDINGLY, NEITHER THESE MATERIALS, NOR ANY COMMUNICATION MADE OR GIVEN IN CONNECTION WITH THESE MATERIALS, MAY BE DEEMED TO CONSTITUTE ANY REPRESENTATION OF WARRANTY, CONTRACT OR GUARANTEE OR MAY OTHERWISE BE RELIED UPON BY ANY PERSON OR ENTITY UNLESS CONVEYED IN WRITTEN FORM. THIS MARKETING INFORMATION AND PLAN ARE PROPERTY OF HOLLAND HOMES.